



Insight Core Update:

Operator ID How to GUIDE

Ryan Lindeman
Product Specialist – Insight Systems
Ryan.Lindeman@millerwelds.com
920.471.2066

This document will walk a user through how to use a new feature to Insight Core; Operator ID.

Contents

Background:	2
How it works:	2
System Requirements to use Operator ID feature:	2
14Pin Insight Core and Axxess/Auto-Axxess:	2
Continuum:	2
How to set up your Operators to use Operator ID:	2
1. Add Operator:	3
2. Deactivate:	4
3. Configure:.....	4
4. Generate Key.....	4
5. Activate:	4
Dashboard change when Operator ID is active:.....	5
Running Reports:	5
What to look for on your Insight Core device with Operator ID active:	6
14Pin Insight Core and Axxess/Auto-Axxess:	6
Continuum:	6

Insight Core Operator ID How to:

Background:

Operator ID is a feature that delivers the capability to now measure individual people, over just being able to monitor the individual welding power source. Through the use of a simple USB stick, companies can now monitor how their individual operators are working and compare them to other operators within their organization. The overall functionality of Insight Core is the same, now we just add in a USB based functionality to know when a user is “logged in” to a device.

If you want to update your Insight Core units from monitoring only the power source, to now monitoring the actual users who are using that power source, this feature is for you.

How it works:

When an operator enters a weld station to begin welding, that user will need to insert a programmed USB stick (which an administrator on your Insight Web portal is able to do) into the Insight Core capable device. That USB stick is programmed for a specific user, and only that user, and will register all welding data being sent to the cloud, for that specified user while the USB stick is inserted into the Insight Core device. This feature will also allow you to now run reports and view information either by device, or by operator.

System Requirements to use Operator ID feature:

14Pin Insight Core and Access/Auto-Access:

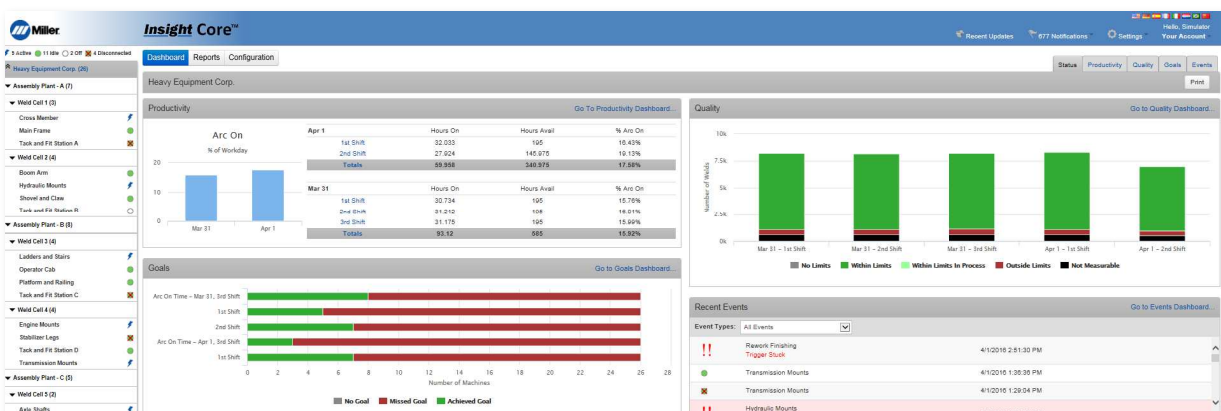
Your Insight Core module needs to be updated to at least firmware revision level 1.24 in order to use the Operator ID feature. Follow the standard process to update your units to this level via use of a USB stick.

Continuum:

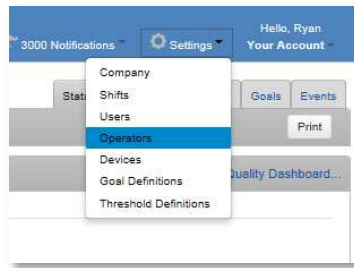
Your Continuum will need to be updated to firmware revision level of 273417D, or newer, in order to gain the capability of Operator ID. Follow the standard process to update your units to this level via use of a USB stick.

How to set up your Operators to use Operator ID:

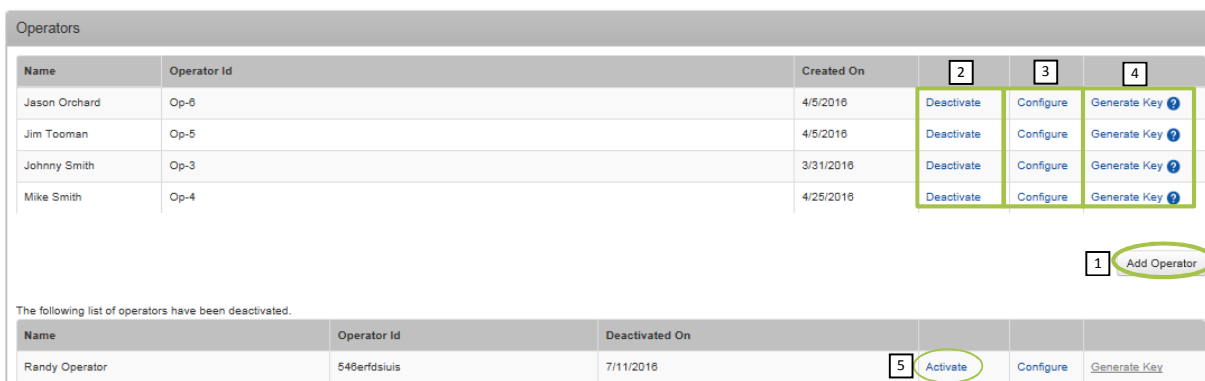
Your main dashboard when you log into your account will not look any different than it did before you updated your units to the Operator ID revision level.



In order for you to begin setting up your operators, go to the settings icon in the upper right corner of your screen, and click on "Operators": *(NOTE: Administrators for your Insight Core site, are the only individuals that will have permission to perform these Operator functions.)*



That will bring you to the Operators Settings screen/page:




On this screen there are two sections, active operators (top), and deactivated operators (bottom). There are five different buttons/links you can click on to perform an operation. These selections are:

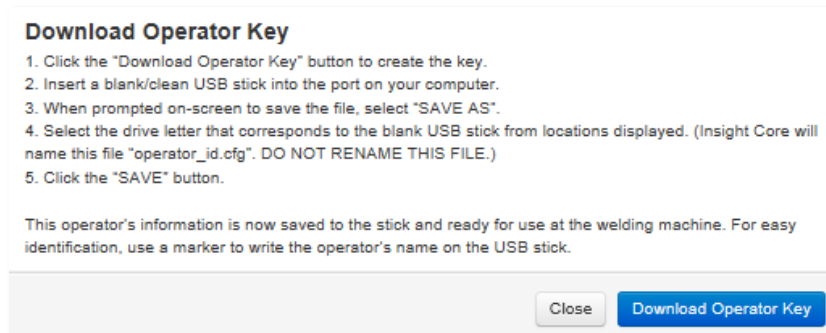
1. **Add Operator:** This will allow you to add an operator to your Insight Core system. Clicking on this link will bring up a dialog box that looks as follows:


 A dialog box titled 'Add New Operator'. It contains five input fields: 'Employee Id:', 'First Name:', 'Last Name:', 'Nickname:', and 'Operator Id:'. The 'Operator Id' field has 'Operator 1' pre-filled. At the bottom are 'Cancel' and 'Save' buttons.

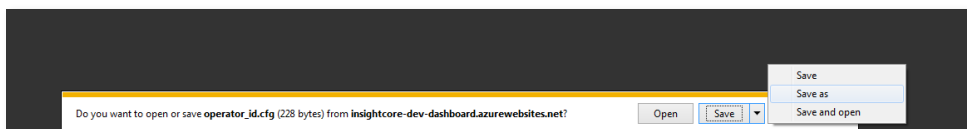
Enter in First and Last name, at a minimum. If you would like to display nicknames for your operators, this feature must be turned on by going to the settings menu and then clicking on Company. Go to the bottom of the page to find a the selection to "use Operator Nickname". If you do not want to use Nicknames, simply leave this box empty.

 A dialog box titled 'Edit Organization'. It contains several input fields: 'Address:', 'Address 2:', 'City:', 'State/Prov:', 'Country:', 'Postal Code:', 'Phone:', and 'Time Zone:'. The 'Use Operator Nickname:' checkbox is checked. A blue arrow points to this checkbox. At the bottom are 'Cancel' and 'Save' buttons.

2. **Deactivate:** Clicking on this will allow you to move an Operator into the “non-active” state. This will remove the operator from your selection when running reports, and moves their ID into the “deactivated” list within the configuration menu. *Note: This does not deactivate the USB stick.*
3. **Configure:** Opening up the “configure” screen opens up the same menu you completed when you added an operator. This will open the same window as under “Add Operator”, only will be titled “Edit Operator and allows you to change the information within that window.
4. **Generate Key:** This is the link that allows you to generate a unique key for a USB stick, to be used by that specific operator. When clicking on this link, you will be instructed to download the Key to an empty USB stick, inserted into your computer. Clicking on the  next to this link will open the following dialog box explaining to you the steps needed to be taken to program the USB stick correctly:



By clicking on “Generate Key”, or “Download Operator Key” if you opened the , you will be prompted to save a file called “operator_id.cfg” to a location on your computer. Click on the arrow next to the “save” button and select “Save As”

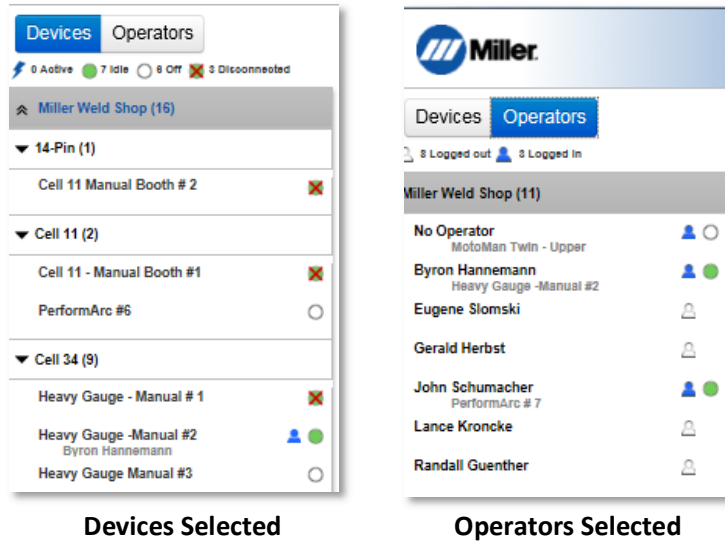


Select your empty USB stick, and then click “Save”. (DO NOT rename the file; operator_id.cfg is required for correct operation). You have now created an operator for your Insight Core System. Follow this same process for as many operators as you need, for your organization.

5. **Activate:** Clicking on this will move an operator from the Deactive state, and move them to the active menu. This will show their operator ID in reports menu where you will be able to select their name and compare operators.

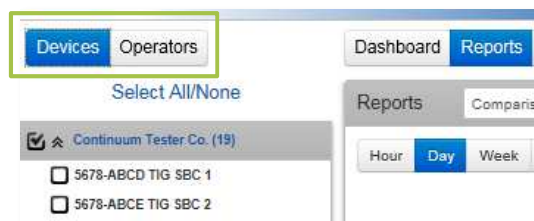
Dashboard change when Operator ID is active:

When you are using Operator ID within an organization the main Insight Core Dashboard will allow you to see information like you are used to, by welding power source, or you can select to now see the information by operator. Here are side by side screen shots that show the differences when you have one or the other selected. The Asset tree changes based on your selection:



Running Reports:

When your units are updated to use Operator ID, this will change how you run reports within the Insight Core system. You will have two options now, rather than just one, by Device or by Operator. To run reports in either of these modes, you click on “Devices” or “Operators”, under Reports, in the upper left hand corner:



When you select “Devices” you will get the usual report list which you select what units you would like to see the information for. When you select Operators, you will now get a list of Operators to select from, rather and units. To run your reports, select what you want to see, and which report you would like to run as you did before the Operator ID functionality was added to your system.



Side by side view

What to look for on your Insight Core device with Operator ID active:

14Pin Insight Core and Access/Auto-Access:

When the USB stick is inserted into the device, the "Network" Led will pulse on and off, every 2 seconds, indicating that Operator ID is active. When the USB stick is removed, data will no longer be sent to the cloud in that user's name, it will go to the cloud as "no operator" if welding continues without an activated USB stick inserted.

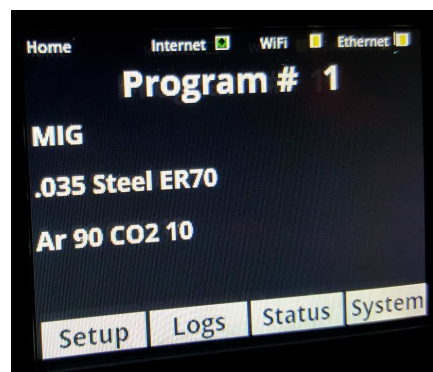


Continuum:

When the USB stick is inserted into the front of the Continuum feeder, a screen will come up indicating that the user (name appears) is logged in; as seen in screen 1. That message will disappear automatically and revert back to the home screen of the Continuum, as seen in screen 2. The difference is that the "internet" symbol will have a small icon of a person, in the box.



Screen 1



Screen 2