



# Insight Core Update:

---

Operator ID How to GUIDE

# Insight Core Operator ID How to:

## Background:

Operator ID is a feature that delivers the capability to measure individual welding operators in addition to being able to monitor the individual welding power source. Using a USB stick, companies can now monitor the performance of individual welding operators and compare them to other operators within their organization.

## How it works:

When an operator enters a weld station to begin welding, that user will need to insert a programmed USB stick (which an administrator on your Insight Web application is able to do) into the Insight Core capable device. That USB stick is programmed for a specific user and will register all welding data being sent to the cloud for that specified user while the USB stick is inserted into the Insight Core enabled device. This feature will also allow you to now run reports and view information either by device or by operator.

## System Requirements to use Operator ID feature:

### 14Pin Insight Core and Axxess/Auto-Axxess:

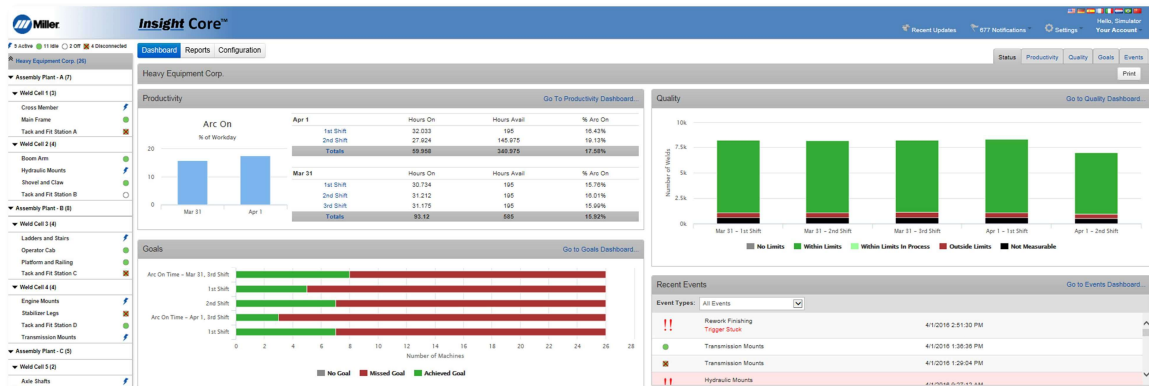
Your Insight Core module needs to be updated to firmware revision level 1.24 or higher to use the Operator ID feature. Follow the standard process to update your units to this level via use of a USB stick.

### Continuum:

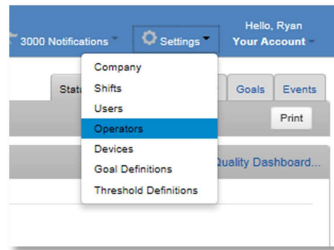
Your Continuum will need to be updated to firmware revision level of 273417C or higher in order to gain the capability of Operator ID. Follow the standard process to update your units to this level via use of a USB stick.

## How to set up your Operators to use Operator ID:

Your main dashboard when you log into your account will not look any different than it did before you updated your units to the Operator ID revision level.



In order for you to begin setting up your operators, go to the settings icon in the upper right corner of your screen, and click on “Operators”: (NOTE: Administrators are the only individuals that will have permission to perform these Operator creation functions.)



That will bring you to the Operators Settings screen/page:

Operators						
Name	Operator Id	Created On	2	3	4	
Jason Orchard	Op-6	4/5/2016	Deactivate	Configure	Generate Key ?	
Jim Tooman	Op-5	4/5/2016	Deactivate	Configure	Generate Key ?	
Johnny Smith	Op-3	3/31/2016	Deactivate	Configure	Generate Key ?	
Mike Smith	Op-4	4/25/2016	Deactivate	Configure	Generate Key ?	
Tom Jumble	opwoeiruty1234567890!@#55^&amp;:"'[_+~-~/?.&it;&#39;&quot;:;][{	4/7/2016	Deactivate	Configure	Generate Key ?	
1 Add Operator						
The following list of operators have been deactivated.						
Name	Operator Id	Deactivated On	5			
Randy Operator	548erfdsiluis	7/11/2016	Activate	Configure	Generate Key	

On this screen there are two sections, active operators (top), and deactivated operators (bottom). There are five different buttons/links you can click on to perform an operation. These selections are:

1. **Add Operator:** This will allow you to add an operator to Insight Core. Clicking on this link will bring up a dialog box:

**Add New Operator**

Employee Id:

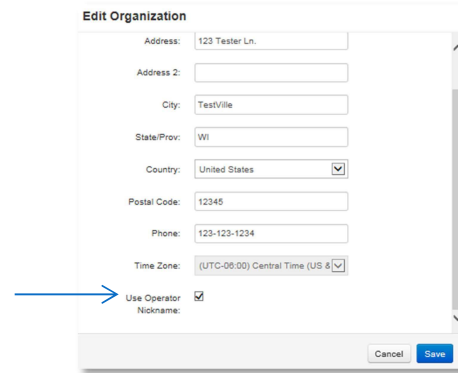
First Name:


Last Name:

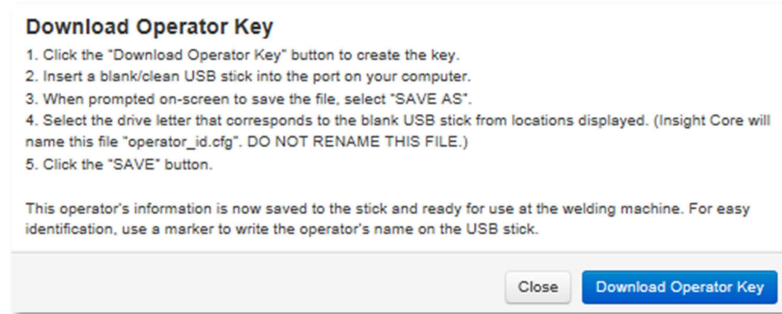
Nickname:


Operator Id:

Enter the operator's Last name at a minimum. If you would like to display nicknames for your operators this feature must be turned on by going to the settings menu and then clicking on Company. Go to the bottom of the page to find a the selection to "use Operator Nickname". If you do not want to use Nicknames, simply leave this box empty.



2. **Deactivate:** Clicking on this will allow you to move an Operator into the "non-active" state. This will remove the operator from your selection when running reports and moves their ID into the "deactivated" list within the configuration menu. Note: This does not deactivate the USB stick.
3. **Configure:** Opening up the "configure" screen opens the same menu you completed when you added an operator allowing you to change the information within that window.
4. **Generate Key:** This is the link that allows you to generate a unique key for a USB stick, to be used by that specific operator. When clicking on this link, you will be instructed to download the Key to an empty USB stick inserted into your computer. Clicking on the  next to this link will open the following dialog box explaining to you the steps needed to be taken to program the USB stick correctly:



By clicking on "Generate Key", or "Download Operator Key" if you opened the , you will be prompted to save a file called "operator\_id.cfg" to a location on your computer. Click on the arrow next to the "save" button and select "Save As"

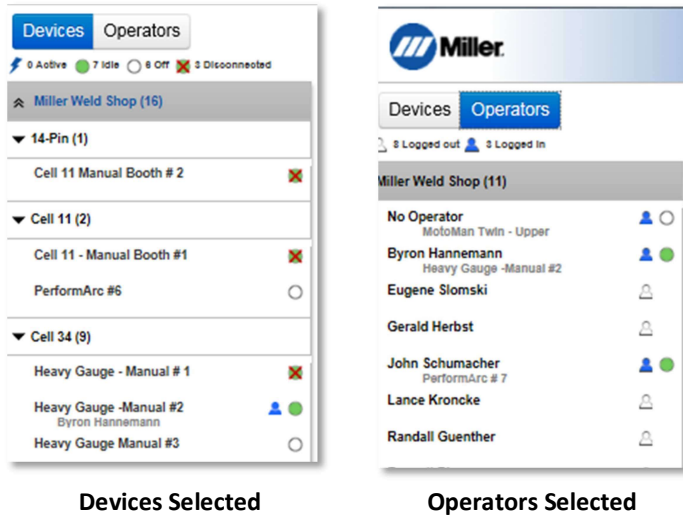


Select your empty USB stick, and then click "Save". (**DO NOT rename the file;** operator\_id.cfg is required for correct operation. Note that if you attempt to save several copies of the Operator\_id.cfg file in the same location, Windows will automatically rename it operator\_id(1).cfg, etc). You have now created an operator for your Insight Core System. Follow this same process for as many operators as you need for your organization.

5. **Activate:** Clicking on this will move an operator from the inactive state and move them to the active menu. This will show their operator ID in reports menu where you will be able to select their name and compare operators.

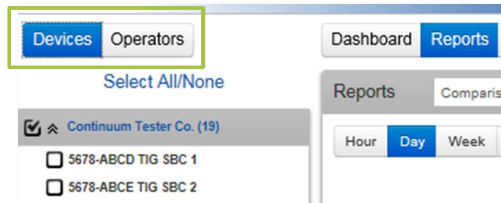
**Dashboard change when Operator ID is active:**

When using Operator ID the main Insight Core Dashboard will allow you to see information by welding power source or by operator. Below are side by side screen shots that show the differences when you have one or the other selected. The Asset tree changes based on your selection:



**Running Reports:**

When units are updated to use Operator ID this will change how you run reports within the Insight Core system. You will have two options now, by Device or by Operator. To run reports in either of these modes click on “Devices” or “Operators” under Reports in the upper left hand corner:



When you select “Devices” you will get the standard report list which you select what units you would like to see the information for. When you select Operators, you will now get a list of Operators to select from. To run your reports select what you want to see and which report you would like to run as you did before the Operator ID functionality was added to your system.



Side by side view

## What to look for on your Insight Core device with Operator ID active:

### 14Pin Insight Core and Axxess/Auto-Axxess:

When the USB stick is inserted into the device the “Network” Led will pulse on and off every 2 seconds indicating that Operator ID is active. When the USB stick is removed data will no longer be sent to the cloud in that user’s name, it will go to the cloud as “no operator” if welding continues without an activated USB stick inserted.

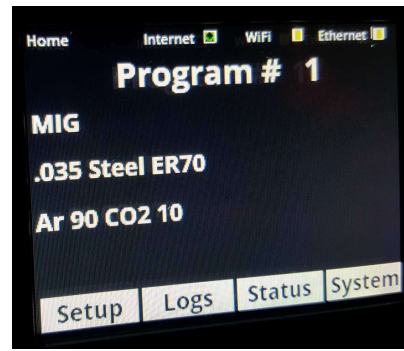


### Continuum:

When the USB stick is inserted into the front of the Continuum feeder a screen will come up indicating that the user is logged in as seen in screen 1. That message will disappear automatically and revert back to the home screen of the Continuum as seen in screen 2. The internet indication box will have a small icon of a person, in the box.



Screen 1



Screen 2

### Deltaweld:

When the USB stick is inserted into the Insight panel on the Deltaweld, the ‘ring’ LED will illuminate and stay on solid. This LED is also used as a USB Read/Write indicator when it is blinking.

